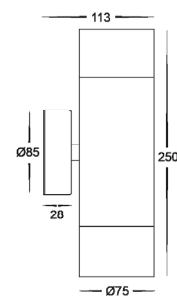


Maxi Tivah 316 Stainless Steel Up & Down Wall Light

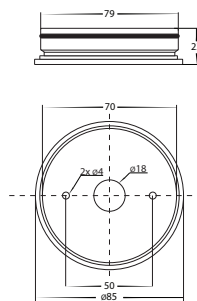
Name	Maxi Tivah
Material	316 Stainless Steel
Colour	Stainless Steel
IP Rating	IP65
Colour Temp	 3000k 4000k 5000k
IK Rating	IK10
Installation Type	Wall - Surface Mounted
Diffuser Type	Clear Glass
Lamp Base	Built in LED
Max Wattage	2x 12w
Protection Class	1 (Requires Earth)
Lamp Expectancy	<30,000hrs
CRI	CRI>80
Dimmable	No
Warranty	3 Years Replacement*



Dimensions



Mounting Base

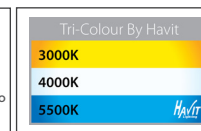
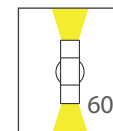


Optional Havit Compatible Accessories

Image	Part Number	Description
	HV9971	Stainless Steel Maintenance Kit - Kit includes rejuvenating paste + Spray for final protection coating

Product Ordering

Image	Part Number	Colour Temp	Lumens	Input Voltage	Beam Angle	Included LED	Barcode
	HV1008T	 3000k 4000k 5000k	2x 1080lm 2x 1140lm 2x 1200lm	240v AC	60°	TRI Colour 2x 12w Built in LED	9350418018861



Warranty
Terms & Conditions

Website



Havit Lighting 143 Beauchamp Road, Matraville, N.S.W. 2036 | Phone: 02 9381 8300 | Fax: 02 9381 6661 | Email: sales@havit.com.au | Web: www.havit.com.au