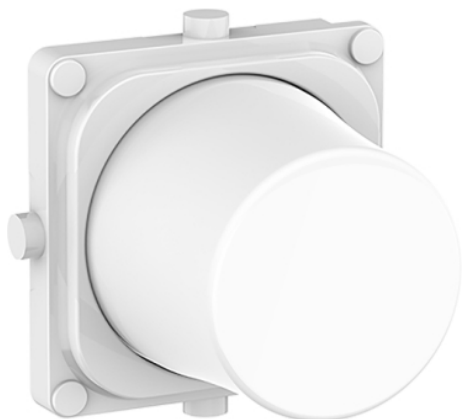


Product data sheet

Characteristics

P40EDIMKB-XW

Pro Series, knob kit for dimmer, White



Main

| | |
|---------------------------|------------|
| Range | Pro Series |
| Product or component type | Knob kit |
| Colour tint | White (XW) |
| Quantity per set | Set of 50 |

Complementary

| | |
|---------------------|---------------------------------------|
| Product destination | Dimmer |
| Device mounting | Flush |
| Material | ABS (acrylonitrile butadiene-styrene) |
| Height | 23 mm |
| Width | 23 mm |
| Depth | 6 mm |

Packing Units

| | |
|------------------------------|---------|
| Unit Type of Package 1 | PCE |
| Number of Units in Package 1 | 1 |
| Package 1 Height | 1.6 cm |
| Package 1 Width | 1.9 cm |
| Package 1 Length | 3.9 cm |
| Package 1 Weight | 16.78 g |

The information provided in this documentation contains general descriptions and/or technical characteristics of the performance of the products contained herein. This documentation is not intended as a substitute for and is not to be used for determining suitability or reliability of these products for specific user applications. It is the duty of any such user or integrator to perform the appropriate and complete risk analysis, evaluation and testing of the products with respect to the relevant specific application or use thereof. Neither Schneider Electric Industries SAS nor any of its affiliates or subsidiaries shall be responsible or liable for misuse of the information contained herein.