

# 30w IP20

## Triac Dimmable LED Driver

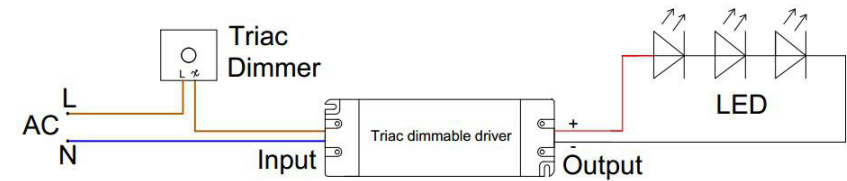
Material	Plastic
Colour	White
IP Rating	IP20
Input Voltage	240v AC
Output Voltage	Available in either 12v DC or 24v DC
Max Wattage	30w (Recommended Max Wattage = 24w)
Protection Class	1 (Earth Required)
Wiring	Parallel
Dimming Range	10%-100%
Protections	Short Circuit, Overload, Over Temperature
Dimmable	Yes (Triac)
Warranty	3 Years Replacement



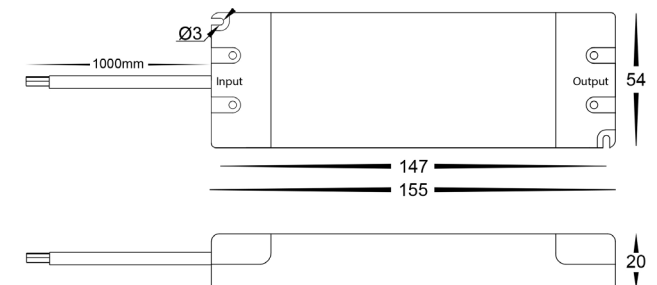
## Product Ordering

Part Number	Output Voltage	Barcode
HV9660-12V30W	12v DC Constant Voltage	9350418009616
HV9660-24V30W	24v DC Constant Voltage	9350418009623

## Sample Installation Diagram



## Dimensions



## Compatible with

Single Colour LED Strip



HV9625



240V Dimmer



Website



Warranty  
Terms & Conditions

		<b>HV9660-12V30W</b>	<b>HV9660-24V30W</b>
<b>Output</b>	DC Voltage	12v DC	24v DC
	Voltage Tolerance	± 0.5V	± 0.5V
	Rated Current	2.5A	1.25A
	Rated Power	30W	
	Line Regulation	± 1V	
	No. Output Cables	± 2V	
	Set up time	2000ms, 50ms(at full load) 110V AC / 230V AC	
	Holding time (Typ.)	15ms(at full load) 110V AC / 230V AC	
	Ripple and Noise(max)	120mVp-p	240mVp-p
	Load Regulation	± 2%	
<b>Input</b>	Voltage range Note 2	90~264V AC	
	Frequency Range	47 - 63Hz	
	Power Factor (TYP) @ Full Load	PF ≥ 0.45 / 230V (at full load)	
	Efficiency(Typ.)@ Full Load	80%	82%
	AC Current (Max)	0.18A / 230V AC	
	Inrush Current (TYP)	Cold start: 50A / 230V AC	
	Leakage Current	<0.5mA / 240V AC	
<b>Protections</b>	Short Circuit	Hiccup mode, Recover automatically after fault condition is removed	
	Overload	120%	
	Over Temperature	Ta: 60°C ~ 70°C	
<b>Environment</b>	Working Temp.	Ta: -40°C ~ +60°C	
	Working Humidity	20%~90% RH, non-condensing	
	Storage TEMP. Humidity	-40°C ~+80°C, 10%~95% RH	
	TEMP. Coefficient	± 0.03%/°c (0-50°c)	
	Vibration	10~500Hz, 2G 12min./ 1 Cycle, Period for 72min, each along X,Y,Z axes	
<b>Safety &amp; EMC</b>	Safety Standards	Compliance to EN61347-1, EN61347-2-13, AS/NZS61347-1, IP66 waterproof rating.	
	Isolation Resistance	I/P-O/P, I/P-FG, O/P-FG: 100Mohms/500Vdc 25°C /70%RH	
	EMC Emission	Compliance to AS/NZS CISPR15	
	EMC Immunity	Compliance to AS/NZS CISPR15	

