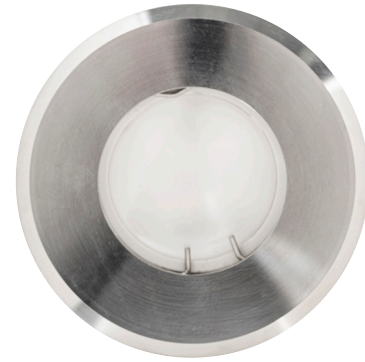
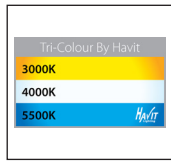


Olo 316 Stainless Steel Recessed Inground or Wall Lights



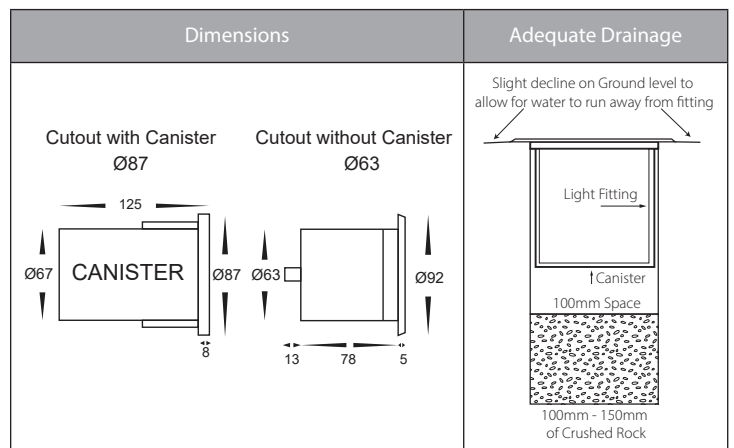
Product Specifications

Name	Olo
Material	316 Stainless Steel
Colour	Stainless Steel
IP Rating	IP65
Installation Type	Wall or Inground - Recessed
Trafficable	500kgs
Cable Length	300mm
Lamp Base	MR16 or GU10
Max Wattage	MR16 = 20w GU10 = 35w
Protection Class	12v Model = 3 (No Earth Required) 240v Model = 1 (Earth Required)
Lamp Expectancy	<30,000hrs
Diffuser Type	Clear Glass
CRI	CRI>80
Dimmable	No - Not with Globe Supplied
IK Rating	IK08
Warranty	3 Years Replacement*



Optional Havit Compatible Accessories

Image	Part Number	Colour Temp	Input Voltage	Beam Angle	Included LED
	HV9506D	3000k 4000k 5500k	240v AC	60°	TRI Colour 3/5/7w GU10 LED
	HV9507	3000k 4000k 5500k	12v DC	60°	TRI Colour 3/5/7w MR16 LED
	HV9508		24v DC		
	HV190-HC	Honeycomb Lens			
	HV9971	Stainless Steel Maintenance Kit - Kit includes rejuvenating paste + Spray for final protection coating			
	12v DC LED Drivers	See Catalogue or Website for full range of 12v DC LED Drivers			



Product Ordering

Part Number	Colour Temp	Lumens	Input Voltage	Beam Angle	Included LED	Barcode
HV19022T-SS316	3000k 4000k 5500k	270lm 285lm 300lm	12v DC	120°	TRI Colour 5w MR16 LED	9350418016416
HV19042T-SS316	3000k 4000k 5500k	270lm 285lm 300lm	240v AC	120°	TRI Colour 5w GU10 LED	9350418016430

*Items ordered after 01-01-2022