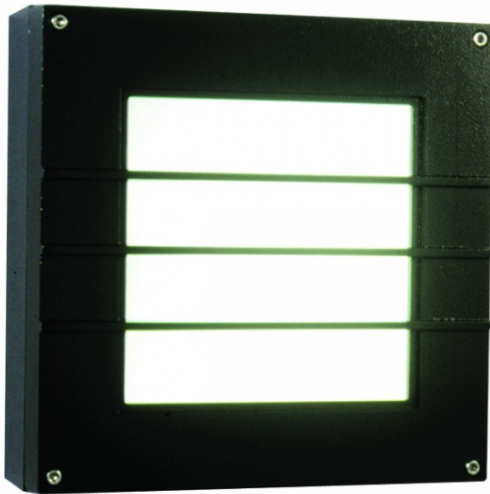
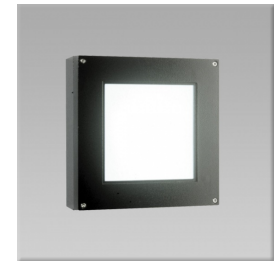


Pane

Surface and semi recessed architectural square luminaires designed for CFL lamp sources.



Specification

- Vandal resistant, opal polycarbonate diffusers
- Variety of optional trim designs in combination with surface or semi recessed mounting bases
- Pressure die-cast aluminium construction with polyester powder coat paint finish in RAL 9005 black
- Other colour options available on request
- Stainless steel exposed fasteners
- Twin cable entries allow through wiring
- Silicone rubber seal provides IP55 weather resistance

Quick Spec

Pierlite Pane IP55 surface mount square wall light in die-cast LM6 aluminium with polycarbonate opal lens. Powdercoat polyester paint finish in RAL 9005 black.

Design Application

Wall or ceiling mount around building perimeters or corridors and stairways.

Product Codes

Code	Version	Dim (mm)	Mass (kg)
PANE26103	26W PLC Horizontal Grille	265 x 265 x 95	3.0
PANE18402	18W PLC Cross Grille	265 x 265 x 95	3.0
PANE26403	26W PLC Cross Grille	265 x 265 x 95	3.0
PANE18102	18W PLC Horizontal Grille	265 x 265 x 95	3.0
PANE26503	26W PLC Horizontal Louvre	265 x 265 x 95	3.0
PANE26003	26W PLC Open Face	265 x 265 x 95	3.0
PANE18502	18W PLC Horizontal Louvre	265 x 265 x 95	3.0
PANE18002	18W PLC Open Face	265 x 265 x 95	3.0

Performance

