

Ratchet

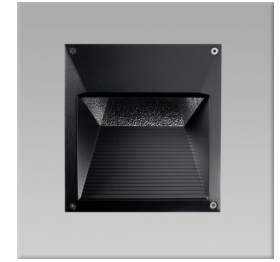
Recessed wall light designed with concealed lamp optics, providing low glare light distribution.



Corrosion resistant die-cast aluminium housing

Specification

- Low glare optical design with wide beam spread using a specular reflector system for optimum performance
- Integral control gear on a modular tray for easy installation
- Thermal shock resistant, clear safety glass cover
- Silicone rubber seal provides IP55 weather resistance
- Corrosion resistant die-cast aluminium housing with a durable polyester powder coat paint finish RAL 9005 black or other colours available to order



Quick Spec

Pierlite Ratchet IP55 low glare, indirect recessed wall light in die-cast aluminium with integral control gear

Design Application

Floorwash lighting for entrances, foyers, pedestrian and vehicular areas around commercial buildings.

Product Codes

Code	Version	Dim (mm)	Mass (kg)
RAT35509	35W G12 Metal Halide	250 x 270 x 105	4.5
RAT26504	26W PLC	250 x 270 x 105	4.0

Performance

