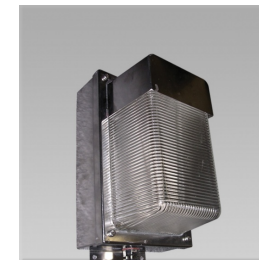


# NXS Stainless Steel

Corrosion resistant wall mount stainless steel bulkhead for extreme industrial and mining applications.



### Specification

- Marine grade 316 stainless steel body and visor with passivated finish
- Heavy duty borosilicate glass lens with internal prisms for optimum light distribution
- Smooth exterior for easy cleaning
- Trim secured to body by four stainless steel screws
- One piece, easy to replace silicone rubber gasket for all models
- All models with durable integral magnetic control gear
- 1 x 20mm cable entries for easy wiring access

### Quick Spec

Pierlite NXS heavy duty die-cast LM6 aluminium body with prismatic borosilicate lens and integral HID or CFL lamp & gear.

### Design Application

Ideal for extreme adverse conditions especially where corrosive chemicals are present or near salt water environments.

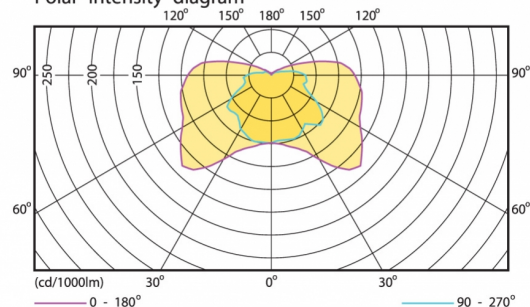
### Product Codes

Code	Version	Dim (mm)	Mass (kg)
NXSS118NM	18W Non Maint. Wall Mt S/Steel	297 x 190 x 178	5.7
NXSS70SCOM	70W HPS Mining Wall Mt S/Steel	297 x 190 x 178	5.9
NXSS70HPSI	70W HPS-I Wall Mt S/Steel	297 x 190 x 178	5.9
NXSS70HPS	70W HPS Wall Mt S/Steel	297 x 190 x 178	5.9
NXSS80MV	80W MV Wall Mt S/Steel	297 x 190 x 178	5.9
NXSS70MH	70W HQI-E Wall Mt S/Steel	297 x 190 x 178	6.0
NXSS226C	2 x 26W PLC Wall Mt S/Steel	297 x 190 x 178	5.9

### Performance

NXS70HPS Ceiling 1 x SHP 70W/CO-E base@C270  
L.O.R. = 0.68 1 x 5800 lm

#### Polar intensity diagram



0°  
max 160 = 661 cd  
max 180 = 102 cd / 1000 lm  
max 190 = 93 cd / 1000 lm

PH649A

#### Horizontal Illuminance

H (m)	E <sub>max</sub> (lux)
3.0	48
3.5	35
4.0	27

