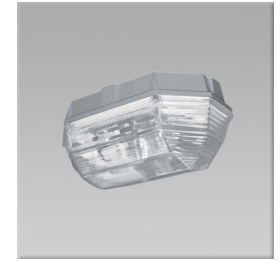


# Powerlite

The Powerlite bulkhead has been designed with toughness in mind, providing a unique square lighting distribution.



## Specification

- Corrosion resistant high pressure die-cast, marine grade aluminium body
- Injection moulded high impact, UV resistant polycarbonate lens with internal prisms produce a wide square light distribution
- Silicone foam gasket system ensuring a high IP66 rating
- Single piece, high purity die formed aluminium reflector is mounted into a white powder coated back plate
- Lens frame is secured to the body by four captive, stainless steel screws
- Control gear mounted directly onto the body to provide optimum heat dissipation
- Cable entry is via 1 x M20 threaded entry at one end of the body
- Dia. 20mm hole outlines provided on each side and the centre back, for drilling

## Quick Spec

Pierlite Powerlite in die-cast LM6 aluminium alloy with unique prismatic polycarbonate lens and integral HID control gear.

## Design Application

Suitable for larger industrial installations, conveyor belt lighting, cable tunnels, perimeter lighting, under canopies, multi-level car parks, and general security lighting.

## Product Codes

Code	Version	Dim (mm)	Mass (kg)
PWR150MH	150W MH Wall Mt only c/w Gear	410 x 270 x 198	7.0
PWR150HPS	150W HPS Wall Mt only c/w Gear	410 x 270 x 198	7.0
PWR100MH	100W MH c/w Gear & Lamp	410 x 270 x 198	6.5
PWR100HPS	100W HPS c/w Gear & Lamp	410 x 270 x 198	6.5

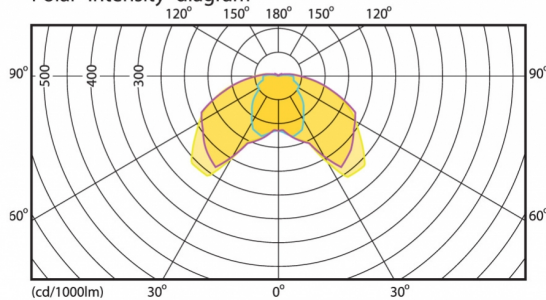
## Accessories

PWRWG	Wire Guard
PWR/BRKT	Galv. Bracket

## Performance

PWR70HPS 1 x HPS-E/I 70W  
L.O.R. = 0.82 1 x 5600 lm

Polar intensity diagram



0°  
max 160 = 1168 cd  
max 180 = 101 cd / 1000 lm  
max 190 = 50 cd / 1000 lm

22051

Horizontal  
Illuminance

H (m)	E <sub>max</sub> (lux)
3.0	89
3.5	66
4.0	50

