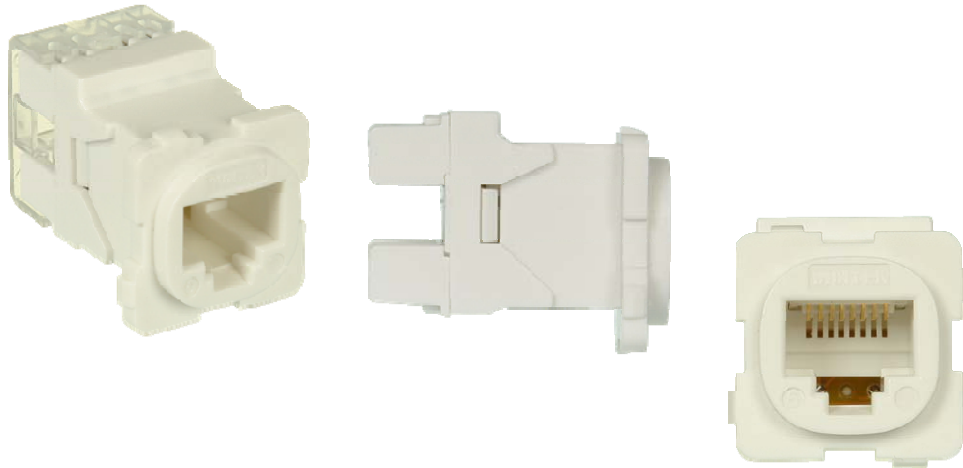


05CRJ45C6A



Digitek RJ45 8P8C CAT6A Australian Style Jack
Suit Digitek Wallplates and other Australian brand Wallplates
Part No: 05CRJ45C6A

The Digitek 05CRJ45C6A Cat6A Jacks are backwards compatible with both Cat6 and Cat5e cable. Enabling you to use the one RJ45 8P8C Jack to suit all your networking needs. The 05CRJ45C6A Jacks have been designed so the cable can be installed either with a krone tool or similar. Or with the special built in clamp down locking system. Both T568A and T568B wiring standard are printed on the side of the network jack to make installation simple.

<p>Specifications Color: White Criteria: EIA/T568A/B (ISO/IEC11801) KRONE TYPE IDC CAT6A</p> <p>Mechanical Performance Material: Body: PC (with cover) all plastic material IDC: Phosphor Bronze with nickel painted Max insertion life >250 mating cycles</p> <p>Contact Pins: Phosphor Bronze with gold-painted 50μ Max insertion life >750 mating cycles PCB: FR-4 Epoxy Glass Cloth(One PCB)</p>	<p>Environment Characteristic Temperature: -60°C-----+80°C Relative humidity: 10%-90%RH</p> <p>Electrical Performance Current Rating: 1.5Amps Contact Resistance: 20Milli-ohm DC Resistance: 0.1ohm Max IDC Accept: 22-26 AWG Solid Wire</p>
--	--