

03JCAT5EB-BL (Blue) 03JCAT5EB-GR (Green) 24AWG UTP CAT5E Cable in 305m Pull Box

1) Construction

Conductor	Nom. Dia.	0.50±0.005mm
	Material	Solid bare copper
Insulation	Nom. Dia.	0.90±0.05mm twisted
	Material	HDPE
Jacket	Nom. O.D.	5.0±0.2mm
	Thickness	0.50mm
	Material	PVC (colour optional)



2) Electrical Characteristics(@20°C)

1-100MHz Impedance	100±15Ω
1-100MHz Delay Shew	≤45ns/100m
DC Resistance	≤9.38Ω/100m
DC Conductor Resistance Unbalance	≤5%
NVP	69%
Capacitance	≤5.6nF/100m

3) Technical Performance(@100m)

Frequency (MHz)	RL ≥dB	ATT ≤dB	NEXT ≥dB	Phrase DELAY ≤ns	PSNEXT ≥dB	ELFEXT ≥dB	PSELFEXT ≥dB
1	20.0	2.0	65.3	570.00	62.3	63.8	60.8
4.0	23.0	4.1	56.3	552.00	53.3	51.8	48.8
8.0	24.5	5.8	51.8	546.73	48.8	45.7	42.7
10.0	25.0	6.5	50.3	545.38	47.3	43.8	40.8
16.0	25.0	8.2	47.2	543.00	44.4	39.7	36.7
20.0	25.0	9.3	45.8	542.05	42.8	37.8	34.8
25.0	24.3	10.4	44.3	541.20	41.3	35.8	32.8
31.25	23.6	11.7	42.9	540.44	39.9	33.9	30.9
62.5	21.5	17.0	38.4	538.55	35.4	27.9	24.9
100	20.1	22.0	35.3	537.60	32.3	23.8	20.8

4) Mechanical Characteristics

Installation Temperature ----- -20°C to +70°C

Operating Temperature ----- -20°C to +70°C

Elongation Before Aging ----- ≥300% (Insulation), ≥100% (Jacket)

Tensile Strength Before Aging ----- ≥16.5MPa (Insulation), ≥13.8MPa (Jacket)

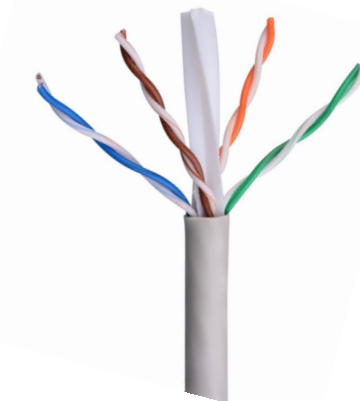
Elongation After Aging ----- ≥75% of unaged (Insulation); ≥50% of unaged (Jacket)

Tensile Strength After Aging ----- ≥75% of unaged (Insulation); ≥85% of unaged (Jacket)

03JCAT6B-BL (Blue) 03JCAT6B-GY (Grey) 23AWG UTP CAT6 Cable in 305m Smart Reel Box

1) Construction

Conductor	Nom. Dia.	0.56±0.005mm
	Material	Solid Bare Copper
Insulation	Nom. Dia.	1.0±0.03mm
	Material	HDPE
Filler	Material	PE Cross
	Material	Nylon Ripcord(optional)
Jacket	Nom. O.D.	6.2±0.4mm
	Average Thickness	0.50mm
	Material	PVC(colour optional)



2) Electrical Characteristics(@20°C)

1-250MHz Impedance	100±15Ω
1-250MHz Delay Shew	≤45ns/100m
DC Resistance	≤7.38Ω/100m
DC Conductor Resistance Unbalance	≤5%
NVP	69%
Capacitance	≤5.6nF/100m
Insulation Resistance	≥5000M Ω *km

3) Technical Performance(@100m)

Frequency (MHz)	RL ≥dB	ATT ≤dB	NEXT ≥dB	Phrase DELAY ≤ns	PSNEXT ≥dB	ELFEXT ≥dB	PSELFEXT ≥dB
1	20.0	2.03	74.3	570.00	72.3	68.0	65.0
4.0	23.0	3.78	65.3	552.00	63.3	56.0	53.0
8.0	24.5	5.32	60.8	546.73	58.7	49.9	46.9
10.0	25.0	5.95	59.3	545.38	57.3	48.0	45.0
16.0	25.0	7.55	56.2	543.00	54.2	43.9	40.9
20.0	25.0	8.47	54.8	542.05	52.8	42.0	39.0
25.0	24.3	9.51	53.3	541.20	51.3	40.0	37.0
31.25	23.6	10.67	52.0	540.44	49.9	38.1	35.1
62.5	21.5	15.38	47.4	538.55	45.4	32.1	29.1
100	20.1	19.80	44.3	537.60	42.3	28.0	25.0
200	18.0	28.98	39.8	536.54	37.8	22.0	19.0
250	17.3	32.85	38.3	536.27	36.3	20.0	17.0

5) Mechanical Characteristics

Installation Temperature	-----	-20°C to +70°C
Operating Temperature	-----	-20°C to +70°C
Elongation Before Aging	-----	≥300% (Insulation), ≥100% (Jacket)
Tensile Strength Before Aging	-----	≥16.5MPa (Insulation), ≥13.8MPa (Jacket)
Elongation After Aging	-----	≥75% of unaged (Insulation); ≥50% of unaged (Jacket)
Tensile Strength After Aging	-----	≥75% of unaged (Insulation); ≥85% of unaged (Jacket)

03JCAT6LSZH-BL (Blue) 03JCAT6LSZH-GY (Grey) 23AWG UTP CAT6 Cable in 305m Smart Reel Box

1) Construction

Conductor	Nom. Dia.	0.56±0.005mm
	Material	Solid Bare Copper
Insulation	Nom. Dia.	1.0±0.03mm
	Material	HDPE
Filler	Material	PE Cross
	Material	Nylon Ripcord(optional)
Jacket	Nom. O.D.	6.2±0.4mm
	Average Thickness	0.50mm
	Material	LSZH (colour optional)



2) Electrical Characteristics(@20°C)

1-250MHz Impedance	100±15Ω
1-250MHz Delay Shew	≤45ns/100m
DC Resistance	≤7.38Ω/100m
DC Conductor Resistance Unbalance	≤5%
NVP	69%
Capacitance	≤5.6nF/100m
Insulation Resistance	≥5000M Ω *km

3) Technical Performance(@100m)

Frequency (MHz)	RL ≥dB	ATT ≤dB	NEXT ≥dB	Phrase DELAY ≤ns	PSNEXT ≥dB	ELFEXT ≥dB	PSELFEXT ≥dB
1	20.0	2.03	74.3	570.00	72.3	68.0	65.0
4.0	23.0	3.78	65.3	552.00	63.3	56.0	53.0
8.0	24.5	5.32	60.8	546.73	58.7	49.9	46.9
10.0	25.0	5.95	59.3	545.38	57.3	48.0	45.0
16.0	25.0	7.55	56.2	543.00	54.2	43.9	40.9
20.0	25.0	8.47	54.8	542.05	52.8	42.0	39.0
25.0	24.3	9.51	53.3	541.20	51.3	40.0	37.0
31.25	23.6	10.67	52.0	540.44	49.9	38.1	35.1
62.5	21.5	15.38	47.4	538.55	45.4	32.1	29.1
100	20.1	19.80	44.3	537.60	42.3	28.0	25.0
200	18.0	28.98	39.8	536.54	37.8	22.0	19.0
250	17.3	32.85	38.3	536.27	36.3	20.0	17.0

5) Mechanical Characteristics

Installation Temperature	-----	-20°C to +70°C
Operating Temperature	-----	-20°C to +70°C
Elongation Before Aging	-----	≥300% (Insulation), ≥100% (Jacket)
Tensile Strength Before Aging	-----	≥16.5MPa (Insulation), ≥13.8MPa (Jacket)
Elongation After Aging	-----	≥75% of unaged (Insulation); ≥50% of unaged (Jacket)
Tensile Strength After Aging	-----	≥75% of unaged (Insulation); ≥85% of unaged (Jacket)