



21929/05 - INTERCONNECT CARBON MONOXIDE ALARM with DIGITAL DISPLAY

21930/05 - INTERCONNECT CARBON MONOXIDE ALARM

Before first using your new Alarm, it is most important that you read and follow these instructions, even if you feel you are quite familiar with this type of product. Keep this document for future reference. In an emergency of a fire dial 000(Australia only)) dial 111(New Zealand Only)

This is a DIY Product

IMPORTANT for related operations, please carefully read and keep this manual.

This manual contains important information about the operation of your Carbon Monoxide alarm. If you install a Carbon Monoxide alarm for someone else, be sure to leave this instruction or a copy with the end user. Advanced and superior electrochemical Carbon Monoxide sensors are generally more effective in detecting colourless, odorless, non-irritating and toxic Carbon Monoxide gases. These asphyxia gases if exposed to the occupant for a period of time can cause serious harm to the human body. For the most efficient detection of slow, toxic Carbon Monoxide gas, installation of an electrochemical Carbon Monoxide alarm can provide an early warning detection and alert the occupant of danger. This device is designed to protect individuals from the acute effects of Carbon Monoxide exposure.

Note*: this device will not safeguard individuals with specific medical conditions. If in doubt consult a medical practitioner.

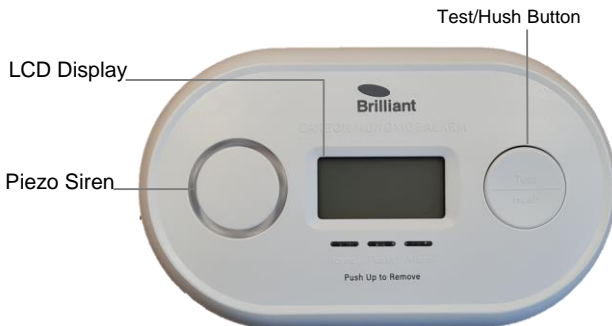
WARNING: INTERCONNECT CARBON MONOXIDE ALARM MUST NOT BE MODIFIED OR TAMPERED WITH.

Gift Box Contents	Quantity
CO alarm	1
AA Batteries	4
Instructions	1
Mounting Screws	2
Rawl Plugs	2
Wall Mount Plate	1

CO Alarm Specifications	
Operation Temperature	5 °C – 38 °C
Ambient Humidity	5 – 99% RH
Alarm Sound Level	>86dB/3m
RF frequency	433.92MHz
Concentration Range	1-1000 PPM
Working Power	6V (4 x AA 1.5V Batteries)

Front View

21929/05



LED Indicator
Normal = Green
Fault = Yellow
Alarm = Red

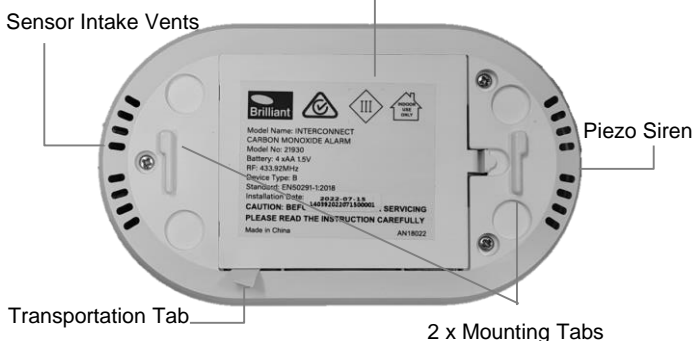
21930/05



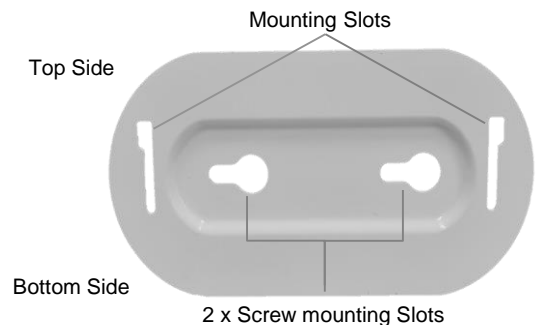
LED Indicator
Normal = Green
Fault = Yellow
Alarm = Red

Back View

Battery Cover/Compartment



Mounting Plate – For both Models





**21929/05 - INTERCONNECT CARBON MONOXIDE ALARM
with DIGITAL DISPLAY
21930/05 - INTERCONNECT CARBON MONOXIDE ALARM**

Important Information

It's important to have working Carbon Monoxide alarms throughout your home and ensure all Alarms are installed correctly. Although this is a DIY product it is always best to seek the advice from your Local Government and/or Authority to obtain correct installation procedures and placement of any Carbon Monoxide detection device.

This product is an interconnect device. Interconnect is a term where a group of devices, more than 1 device, can be Linked/Paired together so when a single unit in that group is triggered this will send a remote frequency(RF) signal to the other devices in the group and activate all devices, alerting the occupants of possible danger. i.e. Fire, high Carbon Monoxide levels, etc...

An example of this is if you have 3 Brilliant Lighting interconnect devices i.e. 1 x Carbon Monoxide Alarm and 2 x interconnect smoke alarms all placed in different area of your house. When one is triggered this will send a RF signal and trigger the other two. All three will be activated allowing the sirens to sound. This will help alert the occupier in the building that there is a possible emergency and to evacuate the area or premises.

The Brilliant Lighting Interconnect Carbon Monoxide Alarm (with or without digital display) can be paired to a total of **22** Brilliant Lighting Interconnect devices.

Please see the below list of Compatible Interconnect devices:

**21929/05 WIRELESS INTERCONNECT CARBON MONOXIDE ALARM with DIGITAL DISPLAY
21930/05 WIRELESS INTERCONNECT CARBON MONOXIDE ALARM**

**21926/05 WIRELESS RF INTERCONNECT SMOKE ALARM
21927/05 SMART WIRELESS RF INTERCONNECT SMOKE ALARM***

Note* placement is crucial of all devices as local conditions of the premises i.e. walls, floors, ceilings can and may block or hinder RF signal resulting in no interconnect activation or delayed interconnect activation to devices.

Please consult this manual and/or your local government for correct placement and fitment to Australian/New Zealand standards.

DO NOT PAINT : Brilliant Lighting Interconnect alarms **MUST NOT** be painted on or over. This may hinder the function of the Device's. If painting is to be done on the surface of which the product is or to be installed, please remove device. Once paint is dry then replace or install device as per these instructions. Note* If device is painted this will void all warranty.

***21927/05 SMART WIRELESS RF INTERCONNECT SMOKE ALARM**

Smart notification should not be relied on as a sole life saving function.
The app function for notification's will not warn the occupier or user if the establishments Wi-Fi network is turned off, malfunctioning or damaged and/or if the internet service has been interrupted from local conditions.



**21929/05 - INTERCONNECT CARBON MONOXIDE ALARM
with DIGITAL DISPLAY**

21930/05 - INTERCONNECT CARBON MONOXIDE ALARM



HARM AND PROTECTION OF CARBON MONOXIDE

Understanding Carbon Monoxide

Carbon monoxide is a colourless, tasteless, irritant and toxic asphyxiating gas. Under the standard condition, the difference between gas density and air density is very small. It exists widely in the production and living environment. If people inhale a certain amount of Carbon Monoxide, they have a chance of becoming ill with Carbon Monoxide Poisoning.

What can cause Carbon Monoxide gases:

- Natural/LPG gas leakage due to aging and damage of Domestic/Commercial gas equipment.
- Gas or Combustion (Not Electric) Heaters in poor ventilated closed room.
- Insufficient fuel combustion.
- Carbon Monoxide is also contained in the exhaust gas of Vehicles with combustible engines, this can cause poisoning to the passengers in a closed Vehicle after entering.

The Dangers of Carbon Monoxide:

Carbon monoxide has a strong reaction with the human blood. Once inhaled, it will produce a chemical reaction with hemoglobin in the blood, causing human poisoning.

If a large amount of Carbon Monoxide is inhaled, it has an impact on the human body:

- **Mild poisoning:** Headache, Dizziness, Mild Nausea Possible Vomiting, Shortness of Breath.
Seek medical treatment.
- **Moderate poisoning:** All of the Above, Chest Pain, Lips and Nails changing Colour to cheery red, Loss of Consciousness(Fainting).
Seek medical treatment.
- **Severe poisoning:** Pale, Dilated pupils, May Cause Death in a short period of time.
Seek medical treatment.

Protection against Carbon Monoxide:

- In daily life, if there is suspected poisoning phenomenon, you should immediately open doors and windows to circulate air.
- After leaving the site of Carbon Monoxide exposure, patients should rest quietly to avoid increasing cardiopulmonary load and increasing oxygen consumption after activities.
- For severe patients, immediately notify the emergency center, after leaving the site exposed to Carbon Monoxide, conduct on-site rescue.
- Early oxygen therapy for patients may be required. Refer to medical advice.



**21929/05 - INTERCONNECT CARBON MONOXIDE ALARM
with DIGITAL DISPLAY
21930/05 - INTERCONNECT CARBON MONOXIDE ALARM**

FUNCTION INSTRUCTIONS

Initialization	Once powered on the product will take approx. 35 seconds to initialise. the Normal 'Green' LED indicator will flash slow 15 times followed by the Alarm 'Red' LED indicator and a tone from the siren. This will complete initialization. Product will now be fully operational
Normal	Green LED flashes once every 60 seconds
Alarm	Once CO is detected, the device will Activate with the Alarm 'Red' LED indicator flashing and Piezo Siren will sound. If same Device is in an Interconnected Network, the Alarm RF module will send a signal and trigger multiple Interconnected Devices within 9 seconds and all Interconnected Alarms Piezo Siren will sound. (Note* Only the detecting Interconnect Device's LED Indicator will flash and siren – all other device in the network Siren will sound only.)
Mute	Once the alarm is activated, press the Test/Hush button of the Alarm of the detection site to mute Alarm. Device will still be active and is only muted for short period of time. If Other interconnected alarms triggered, these will be muted once the detected alarm is muted. Note*: if detected alarm is muted this will mute all devices. if muting other device in network this will not mute all devices that are activated except the detected device.
Fault	The yellow LED flashes twice every 60 seconds, accompanied by two beep from the Piezo siren. – If fault occurs, remove and replace batteries. If still fault replace device with new.
Low battery	Yellow LED flashes three times every 60 seconds, accompanied by three beep buzzer sound. Note*: batteries normal operating life is 2 years though may vary due to frequency of manual (weekly testing) use.
Test	Press the TEST/HUSH button, and the device will prompt (alarm, fault and low voltage) according to the current status. When testing all interconnect Device's, the alarms will sound and all LED indicators will flash. Press Test/Hush button again to mute all devices. Subsequently wait 10 seconds and all alarms will deactivate by themselves..

Concentration Range (1-1000PPM)	Alarm response time	Indicator before reaching alarm value
<50 PPM	No alarm	
50-100 PPM	Alarm after about 80min	Red LED flashes every 2 min
100-300 PPM	Alarm after about 30min	Red LED flashes every 2 min with a beep
>300 PPM	Alarm after about 50s	Detector can not be muted

NOTE*: Manually mute function will NOT work when the concentration of CO is more than 300 ppm.



21929/05 - INTERCONNECT CARBON MONOXIDE ALARM with DIGITAL DISPLAY
21930/05 - INTERCONNECT CARBON MONOXIDE ALARM

INSTALLATION LOCATION

Note this is a Guide only – Always seek professional advice from your local Government or emergency services.*

Which Area's should the Carbon Monoxide Alarm be installed in?

Note: This detector only indicates the presence of Carbon Monoxide gas at the sensor. Carbon monoxide gas may be present in other areas.

Carbon Monoxide Alarm's should be installed in each room, so that it can effectively detect Carbon Monoxide exposure and predict any danger's in advance. Installing multiple Interconnected Device through out the premises will ensure that the occupants will be given sufficient warning and alerted to any emergency that may occur.

The following points should be considered when installing Carbon Monoxide alarms:

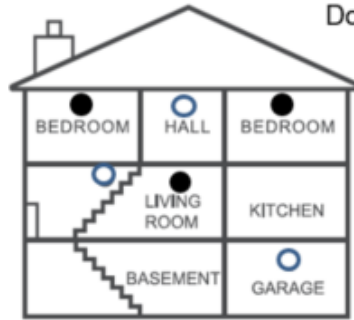
- Install the Carbon Monoxide alarm in rooms/area's where burner is located most of the time. Especially the kitchen door and the fireplace door.
- If the Carbon Monoxide alarm is in a room that is not normally used (such as a boiler room), the Carbon Monoxide alarm should be placed outside the room to make it easier to hear the alarm.

Single story dwelling



● Maximum protection
 ○ Limited protection

Double story dwelling

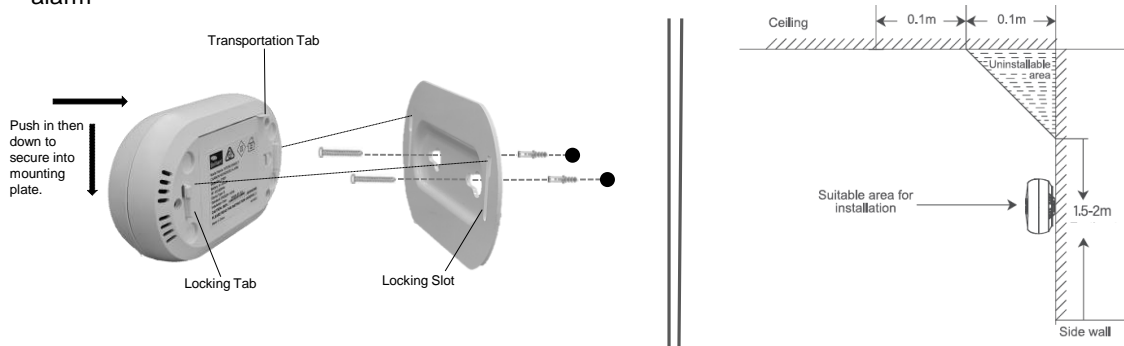


● Maximum protection
 ○ Limited protection

HOW TO INSTALL CARBON MONOXIDE ALARM -

Note*: Do not install on Ceiling - this Device is for wall installations only. Indoor use only!

1. Unpack the fixture carefully and place it on a flat surface. Dispose of the packaging material thoughtfully. Determine the installation position and do not obstruct or block the air inlet of the alarm



2. Fix the wall mounting plate of Carbon Monoxide alarm with supplied 2 x Mounting screws and Rawl plugs.
3. Remove transportation tab from batter compartment of the Carbon Monoxide alarm and activate the device. Initialization will take approx. 35 seconds. Label installation date day/month/year.
4. Line up Locking Tab of Carbon Monoxide alarm to the Locking Slot of Mounting Plate, push in Alarm gently push down securing and locking Alarm to Mounting Plate.
5. Once the Device is firmly secure and fully initialized press the test button. If the device indicates Normal (Green LED Indicator), the installation is successful.



**21929/05 - INTERCONNECT CARBON MONOXIDE ALARM
with DIGITAL DISPLAY**

21930/05 - INTERCONNECT CARBON MONOXIDE ALARM



Interconnect Pairing Mode Setup:

To connect multiple Wireless RF Interconnect Alarms follow setup guide below.

We refer the Main Alarm as Primary Alarm.(this can be any of your Wireless RF Interconnect Alarms).All others will be referred as Secondary Alarms.

Primary Carbon Monoxide Alarm

Select a Carbon Monoxide Alarm that will be the Primary alarm.

Press and hold Test/Hush Button and allow the LED indicator to flash **Green 3 times**.

The procedure will be as follows:

- Press and Hold Test/Hush Button
- 1st Green LED Flash - no beep
- 2nd Green LED Flash - quick beep
- 3rd Green Led Flash - long beep.
- Release Reset/Test/Hush button.
- The LED indicator will now rapidly flash RED.

Secondary Carbon Monoxide Alarm/s

Press and hold Test/Hush Button and allow the LED indicator to flash **Green 2 times**.

The procedure will be as follows:

- Press and Hold Test/Hush Button
- 1st Green LED Flash - no beep
- 2nd Green LED Flash - quick beep
- Release Reset/Test/Hush button.
- The LED indicator will now slowly flash RED 3 times.

This is now paired to the Primary Carbon Monoxide Alarm.

Repeat the these steps for multiple Interconnect Alarms.

Once all Secondary Alarms have gone through the pairing setup, press the Primary Alarm Test/Hush Button once to stop pairing procedure.

Note* Pairing Mode on the Primary alarm may time out after **1 minute**. After this time if all Alarms have not been paired, repeat the Interconnect Pairing Mode Setup.



**21929/05 - INTERCONNECT CARBON MONOXIDE ALARM
with DIGITAL DISPLAY
21930/05 - INTERCONNECT CARBON MONOXIDE ALARM**

Additional Installation Notes for installing the Carbon Monoxide alarm in the room:

Note*: Always refer to your Local Government and Emergency Services Policies and procedures.

Carbon Monoxide alarms located in the same room as the fuel-burning appliance, suitable for wall and ceiling installation, as follow:

- The horizontal distance between the Carbon Monoxide alarm and the fuel burning appliances is between 1m - 3m.
- If there is a partition wall in the room, the Carbon Monoxide alarm should be located on the same side as the fuel burning appliances.
- In a room with a sloping ceiling, the Carbon Monoxide detector should be installed high in the room.
- Do not obstruct or block the alarm inlet vent.

Carbon Monoxide alarms are to be installed on the wall surfaces only. Please make sure that it is installed at a height of 1.5m - 2m from the ground.

Installation in Vehicles and or motor Homes/Caravans

- Always refer to the Vehicle/Motor Home/Caravan manufacturers Policy and Procedures.

TROUBLESHOOTING

TROUBLE	PROBABLE CAUSE	SUGGESTED REMEDY
Interconnect Carbon Monoxide Alarm will not silence while testing.	Test procedure still in process	Wait 10-15 seconds, if not silent remove unit from mounting plate and remove batteries at back of unit. Wait 1 minute return unit to mounting plate. Follow test procedures.
	Test/Hush button pressed multiple times	Alarm time will be extended if button is pressed multiple times during testing procedure. This will be original time of 15 seconds and further time depending on how many times button pressed.
	Faulty unit	Fill warranty claim form for replacement. www.brilliantlighting.com.au Proof of purchase required.
Interconnect Carbon Monoxide Alarm triggered when occupants cooking or showering.	Alarm installed at incorrect location.	Refer to page 2, Installation Location. Clean Alarm – refer to page 4 Testing and Maintenance



21929/05 - INTERCONNECT CARBON MONOXIDE ALARM with DIGITAL DISPLAY

21930/05 - INTERCONNECT CARBON MONOXIDE ALARM

CARBON MONOXIDE ALARM TEST INSTRUCTIONS

Do not remove or disconnected the battery. This will cause the Carbon Monoxide alarm to be non-Functioning. Do not use an open fire or other toxic gases to test Carbon Monoxide alarm. This may damage the alarm or the house, and in serious cases, it may cause life danger to itself or others.

The test button can accurately test the alarm performance of Carbon Monoxide alarm. Press the test button of the Carbon Monoxide alarm once a week or when returning to the room from holiday, it needs to be tested to ensure normal alarm operation.

When testing Carbon Monoxide alarm. Hearing protection may need to be worn as the alarm's siren is loud. Press the button for 1 second, the Carbon Monoxide alarm will activate. Press the button to Mute the alarm.

FIRE SAFETY PRACTICE - discuss with all family members to develop and practice regularly a emergency evacuation plan.

If the Carbon Monoxide alarm sounds or the alarm pre indicates:

- Let everyone hear the sound of the Carbon Monoxide alarm and understand the meaning of the sound.
- If you can ensure your own safety and the site is controllable, you can evacuate to an open and safe area after cutting off the source.
- Determine the exit of each room and the escape route from each exit to the outside.
- If the doors and windows are closed, the doors and windows shall be opened immediately to circulate air.
- Identify safe meeting places for all members outside the building.

MAINTENANCE AND CLEANING

The device is designed to be as maintenance-free as possible, but there are a few simple procedures to be carried out on a weekly basis for correct operation of the device.

- Testing - Press the Test/Hush button at least once a week to ensure the normal alarm of the equipment.
- Cleaning - Remove the device from the mounting plate and using a dry soft cloth, wipe and dust the Carbon Monoxide alarm removing any residue or dust that may hinder performance. Use a Vacuum with a soft brush accessory to remove any hair, lint or other material from the sensor intake.

Note*: Do not use water, detergents or solvents as they may damage the equipment.

- If the Carbon Monoxide alarm is affected by too much dust or dirt, please replace the equipment immediately.
- When the battery becomes low, the Carbon Monoxide alarm will flash yellow three times with three beeps. The alarm will activate every 60 seconds, you should immediately replace the batteries – 4 x 1.5V AA.
- When the sensor in the Carbon Monoxide alarm is damaged, the Carbon Monoxide alarm LED will flash yellow twice every 60 seconds with two beeps- this is a fault and may be rectified by removing the batteries for 1 minute then reinstall. If the Carbon Monoxide alarm does not return to normal working condition, please replace the Carbon Monoxide alarm.

Do not place the detector in the following environments: cleaning fluid, paint, cooking operations, etc. which may affect the short-term or long term reliability of the Carbon Monoxide detector.



**21929/05 - INTERCONNECT CARBON MONOXIDE ALARM
with DIGITAL DISPLAY
21930/05 - INTERCONNECT CARBON MONOXIDE ALARM**

CARBON MONOXIDE ALARM LIMITATIONS

Carbon monoxide alarms play a key role in reducing the number of injuries caused by Carbon Monoxide in households worldwide. However, as with any alarm device, a Carbon Monoxide alarm will only issue an alarm indication if it is properly positioned, installed and maintained, and when the Carbon Monoxide concentration reaches the alarm threshold.

- Carbon monoxide alarm may not alert everyone. Makes sure everyone, from children to the elderly, make sure to practice the escape plan at least twice a year. Let the children hold fire drills before going to bed at night to increase self-awareness. If a child or other person can not easily hear the sound of a Carbon Monoxide alarm, or if there are restrictions on movement by an infant or family member, make sure to assign someone to assist them in fire drills and emergency situations. It is recommended that you perform a fire drill while you family is sleeping to determine their response to the Carbon Monoxide alarm while they are sleeping and whether they need help in an emergency.
- Limited life of Carbon Monoxide alarm. If damage is caused by improper operation, replace it immediately. **You should replace the Carbon Monoxide alarm 10 years from the date of Manufacturing.** See the label on the back of Carbon Monoxide alarm. Example: AN32521 is 325th day of 2021. Life time may vary due to storage condition of temperature and humidity.

Warranty

Brilliant Lighting warrants this product against defects in manufacture and workmanship for a period of 3 years only from date of purchase or as specified elsewhere. This warranty applies for this product use in a domestic and/or commercial applications. This warranty is only valid for products installed and operated within the guidelines specified by Brilliant Lighting and within the correct operating voltage ranges as stated on the product's rating label.

Warranty does not include damage or loss arising from incorrect installation, operation or maintenance of this product, damage caused through modification, incorrect installation, service by unqualified or unauthorised personnel or lack of regular maintenance and cleaning. Proof of installation by qualified personnel may be required, e.g. Electrical Safety Certificate. Proof of purchase must be supplied with all warranty claims.

This warranty is provided in addition to any other rights and remedies of the customer under any law. In applications not intended for household, personal or domestic use, liability is limited to replacement or reimbursement of product only. Brilliant Lighting does not warranty the costs of removal or re-installation of this product or associated components.

Our goods come with guarantees that cannot be excluded under the Australian Consumer Law. You are entitled to a replacement or refund for a major failure and compensation for any other reasonably foreseeable loss or damage. You are also entitled to have the goods repaired or replaced if goods fail to be of acceptable quality and the failure does not amount to a major failure.

Any claim under this warranty must be made within the specified warranty period from date of purchase of this product. To make a claim under the warranty; at your own expense take the product (with proof of purchase – receipt or similar) to the store where you purchased the product or contact Brilliant Lighting at the address below.

This warranty is given by:

Brilliant Lighting (Aust) Pty. Ltd.
ABN 37 006 203 694
956 Stud Road Rowville, VIC 3178
Phone: 03 9765 2555
Email: warranty@brilliantlighting.com.au
MADE IN CHINA