

## Register the BrilliantSmart App

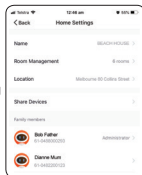
Open the BrilliantSmart app.

For new users, register a new account or if existing user, login with your user name and password.

## Configure your BrilliantSmart App

### Setting up your Home

You can setup multiple homes or locations. Click 'Add Home' button. Or click on 'Home' top left if you are adding or modifying details then 'Home Management' to setup your home(s), add or rename rooms and share devices.



8

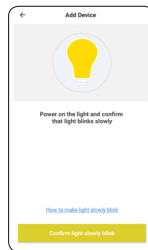
## Add your Smart Device to your App

1. On initial power-on, the smart device will begin blinking rapidly and be ready to pair (2 times per second). (If smart device does not automatically start blinking, hold the button down until the indicator blinks rapidly.)

2. Open the BrilliantSmart App, tap 'Add Device' (if empty room) or '+' to add your smart device.

3. Select 'Connector' in the list of devices.

If device is blinking rapidly then press 'Confirm indicator rapidly blink'.



9

4. Enter your home WiFi password.



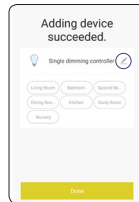
Connection will now begin.

5. Once connected you'll get a menu 'Adding device succeeded'.

Select the room device and press 'Done'.

You can click on the pen to change the device name.

6. The smart device can now be controlled by the BrilliantSmart app.



10

Go to [www.brilliantsmart.com.au](http://www.brilliantsmart.com.au) for full instructions and features

## Warning

1. To prevent injury, this apparatus must be installed safely and correctly.
2. Do not open or tamper with smart device. Injury may occur.
3. Do not exceed rate loading.
4. For indoor use only. Not suitable outdoors.
5. Do not allow children to play with wall switch tuning ON/OFF rapidly. This can cause smart device to reset.
6. Power Surge/Power Loss could possibly reset smart device. If this happens follow setup instructions.

**NB: BrilliantSmart app screens may differ due to application updates & improvements.**

For any problems connecting your smart device to BrilliantSmart app please visit: [www.brilliantsmart.com.au/faqs](http://www.brilliantsmart.com.au/faqs)

11

## Warranty

Brilliant Lighting warrants this product against defects in manufacture and workmanship for a period of 12 months from date of purchase. Warranty does not include damage or loss arising from incorrect installation, operation or maintenance of this product, damage caused through modification, or incorrect installation.

Our goods come with guarantees that cannot be excluded under the Australian Consumer Law. You are entitled to a replacement or refund for a major failure and compensation for any other reasonably foreseeable loss or damage. You are also entitled to have the goods repaired or replaced if goods fail to be of acceptable quality and the failure does not amount to a major failure. Any claim under this warranty must be made within 12 months of the date of purchase of the product. Refer to our website [brilliantlighting.com.au](http://brilliantlighting.com.au) for terms and conditions and warranty claims.

This warranty is given by:  
Brilliant Lighting (Aust) Pty. Ltd.  
ABN 37 006 203 694  
956 Stud Road Rowville, VIC 3178  
Phone: 03 9765 2555  
Email: [info@brilliantlighting.com.au](mailto:info@brilliantlighting.com.au)  
MADE IN CHINA

12

## Disposal

Please dispose of this packaging material thoughtfully.

Please dispose of this product thoughtfully once it has passed its useful life.

When your smart device comes to the end of its life or you choose to update or upgrade it, please do not dispose of it with your normal household waste. Please recycle where facilities exist.

When disposing of this fitting, check with your local authority for suitable options.

**Brilliant Lighting**  
956 Stud Road  
Rowville Vic 3178 Australia  
[www.brilliantlighting.com.au](http://www.brilliantlighting.com.au)

**Australian Sales**  
T 03 9765 2555  
T 1800 817 754 (interstate only)  
F 03 9763 0277  
E [warranty@brilliantlighting.com.au](mailto:warranty@brilliantlighting.com.au)

**New Zealand Sales**  
T 09 974 9618  
E [sales@brilliantlighting.co.nz](mailto:sales@brilliantlighting.co.nz)



2147 07/20 00

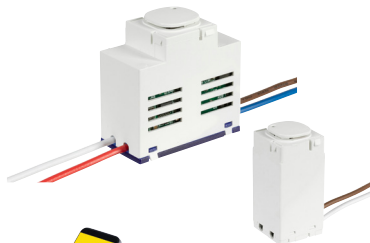
13



WiFi Dimmer Mech  
MASTER GEN 2 - 21521  
SLAVE GEN 2 - 21530

## TRAILING EDGE DIMMER

Programmable minimum light level



USER MANUAL

## Technical Specifications

**Model Number:** GEN 2 - 21521  
**Input:** 240V 50Hz  
**Load:** 200W LED, 300W Resistive  
**Dimming method:** Trailing edge  
**2-way switching:** When used with Slave Mech 21530 manual override  
**Dimension:** 42 x 21 x 40Hmm  
**Connections:** Fly wire  
 3 Wire design (requires neutral)  
**Warranty:** 1 year  
**Security:** Mac Encryption; WEP/WAPI/TKIP/AES  
**WiFi Standard:** IEEE802.11b/g/n  
**System Req's:** iOS 8.0 or higher, Android 4.1 or higher

**Model Number:** GEN 2 - 21530  
**Connected load:** refer to master dimmer above  
**Dimming method:** Trailing edge  
**Dimension:** 21 x 21 x 44Hmm  
**Connections:** Fly wire (2 wires)  
**Warranty:** 1 year

## Installation

**BEFORE INSTALLATION, PLEASE CHECK THAT THE LOCATION OF THE SMART WIFI MASTER DIMMER MECH IS WITHIN RANGE OF YOUR HOME WIFI AND THE SIGNAL IS STRONG.**

**MUST BE INSTALLED BY A LICENSED ELECTRICIAN.**

### IMPORTANT SAFETY ISSUES

Ensure the power is disconnected before installing. This product is NOT suitable for damp or explosive environments.

Modification of this product will void any warranty. Indoor use only. Do not cover in insulation.

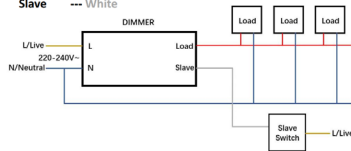
The installation must follow AS/NZS 3000 wiring rules and building codes.

When drilling into walls and ceilings, care must be taken to ensure you do not damage electrical wiring and other hidden utilities.

- Disconnect power.
- Remove switch plate from the wall.
- Connect the Master and Slave dimmer in accordance with this wiring diagram and wire labels:

### LEGEND

Live --- Brown  
 Neutral --- Blue  
 Load --- Red  
 Slave --- White



- For installations involving more than one dimmer on the switchplate, refer to the multi-gang de-rating instructions before commencing wiring.
- Refit switch plate to the wall.
- Reconnect power.

## MULTIGANG DE-RATING

When more than one dimmer is used on a common wallplate, their combined heat will affect their overall performance. Consequently, multiple dimmers must be de-rated.

Number of dimmers	Max. load per dimmer	
	Resistive	LED
1	300W	200W
2	250W	140W
3	200W	110W

## PROGRAMMING MINIMUM LIGHT LEVEL

The minimum dimming level can be raised to increase compatibility with a wide range of downlights under the settings menu of the smart dimmer. This can be saved and locked to prevent accidental changes.

Load type can also be selected to better match dimming characteristics to your light.



## SUGGESTED DOWNLIGHTS

This dimmer works with most LED dimmable downlights. If required you can raise the minimum dimming level to avoid any low level flickering due to differing driver designs.

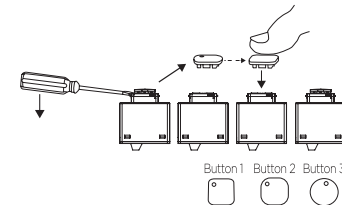
For reference, the below downlights have been tested and found compatible under laboratory controlled conditions.

Brand	Downlight
BRILLIANT	20429 TRILOGY (JO220+)
BRILLIANT	20204 UMBRA CCT
BRILLIANT	20454 MINI TRIM II
ATOM	AT9039/WH/TRI*
LEDVANCE	SUPERSTAR*
PHILIPS	DN029B2/91140185 1597
PIERLITE	DLP63/4/65FWG2

\*Raise min to 28% for best performance

## REPLACE BUTTON CAP TO SUIT WALL PLATE

Remove button cap with screwdriver as shown below. Install new button cap onto mechanism by aligning correctly and pushing firmly until it clicks into place.



## SMART DIMMING

The smart dimmer works in sync with the BrilliantApp. Choose to control from either the physical button or the app in perfect sync.

## Connect to your WiFi

Ensure your mobile phone is connected to your 2.4GHz WiFi network.

Your mobile phone and your smart device needs to be within good signal strength range of your WiFi router. (Refer to your router specifications for max range.)

## Download the BrilliantSmart App

Please download the free BrilliantSmart app from the App store or Google Play store, or scan the QR code below.

